

For Commercial, Industrial & Marine Applications

Job Name _____

Contractor _____

Job Location _____

Approval _____

Engineer _____

Contractor's P.O. No. _____

Approval _____

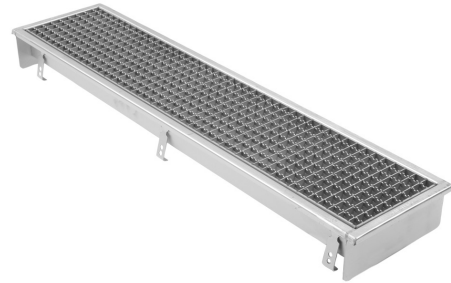
Representative _____

Tag _____

BT12 Series
12" Wide Pre-Sloped Trench Drain

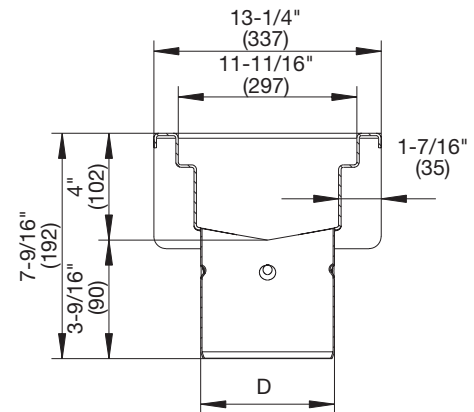
Specification:

BLÜCHER Series BT12 AISI Type 304 stainless steel pre-sloped trench drain, 12"(300) wide x (specify) long, with 1% longitudinal slope and 160 degree cross fall, 1"(25) thick pedestrian duty mesh grating, and spigot outlet.



Optional Grating:		
Suffix	Description	
-SG	Slot Grating	<input type="checkbox"/>
-XLG	Extra Heavy Duty Ladder Grating	<input type="checkbox"/>

Options		
Suffix	Description	
-316	Type 316 Stainless Steel	<input type="checkbox"/>
-B	Sediment Basket	<input type="checkbox"/>
-FC	Outlet w/Membrane Clamp	<input type="checkbox"/>
-LD	Grate Locking Device	<input type="checkbox"/>
-P	Stainless Steel P-Trap	<input type="checkbox"/>



Dimensional Chart

Model No.	Pipe Size	Length
Series BT12	Specify	Specify

Approvals



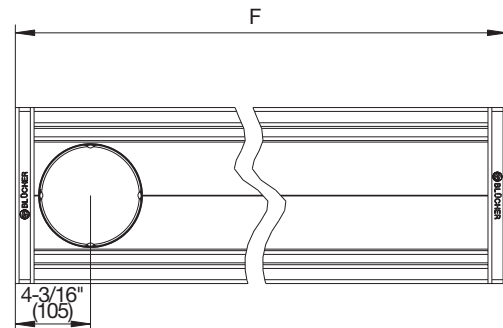
Compliance with NSF/ANSI/3-A 14159-1-Hygiene Requirements for the Design of Meat and Poultry Processing Equipment



Product is certified to the uniform plumbing code ASME A112.6.3

NOTICE

The information contained herein is not intended to replace the full product installation and safety information available or the experience of a trained product installer. You are required to thoroughly read all installation instructions and product safety information before beginning the installation of this product.



A WATTS Brand