

For Commercial, Industrial & Marine Applications

Job Name _____

Contractor _____

Job Location _____

Approval _____

Engineer _____

Contractor's P.O. No. _____

Approval _____

Representative _____

Tag _____

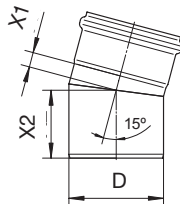
Pipe Bends

Specification:

BLÜCHER Pipe AISI Type 316L (standard) stainless steel pipe system, with Push-Fit socket connections with EPDM (standard) sealing ring. All BLÜCHER Pipe to be treated with pickling and passivation finish process.



Global Ref. # 820.015.XXXS

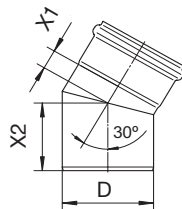


15° Bend Dimensional Chart

Model No.	D	X1	X2
B1.5-15-316	1.5"(40)	5/8"(15)	2-1/16"(53)
B2-15-316	2"(50)	5/16"(7)	2-3/16"(54)
B3-15-316	3"(75)	7/16"(11)	2-5/8"(66)
B4-15-316	4"(110)	11/16"(18)	3-1/8"(78)
B5-15-316	5"(125)	9/16"(14)	3-5/16"(84)
B6-15-316	6"(160)	15/16"(23)	3-15/16"(99)
B8-15-316	8"(200)	15/16"(23)	4-7/8"(123)
B10-15-316	10"(250)	1-3/16"(30)	5-3/8"(136)



Global Ref. # 820.030.XXXS

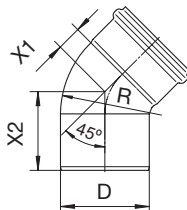


30° Bend Dimensional Chart

Model No.	D	X1	X2
B1.5-30-316	1.5"(40)	11/16"(18)	2-3/16"(55)
B2-30-316	2"(50)	7/16"(11)	2-1/4"(57)
B3-30-316	3"(75)	11/16"(18)	2-13/16"(71)
B4-30-316	4"(110)	15/16"(23)	3-3/8"(85)
B5-30-316	5"(125)	15/16"(23)	3-7/8"(98)
B6-30-316	6"(160)	1-3/8"(34)	4-3/8"(110)
B8-30-316	8"(200)	1-1/2"(37)	5-7/16"(137)
B10-30-316	10"(250)	1-15/16"(48)	6-1/16"(153)



Global Ref. # 820.045.XXXS



45° 1/8 Bend Dimensional Chart

Model No.	D	X1	X2	R
B1.5-45-316	1.5"(40)	13/16"(21)	2-1/4"(58)	1.5"(40)
B2-45-316	2"(50)	7/8"(21)	2-3/8"(60)	2"(50)
B3-45-316	3"(75)	1-1/8"(28)	3"(76)	3"(75)
B4-45-316	4"(110)	1-1/2"(38)	3-11/16"(93)	4"(110)
B5-45-316	5"(125)	2-1/8"(53)	4-3/8"(111)	5"(125)
B6-45-316	6"(160)	1-15/16"(49)	5-3/16"(131)	6"(150)
B8-45-316	8"(200)	5-3/8"(136)	9-3/16"(234)	8"(200)
B10-45-316	10"(250)	6-15/16"(176)	11"(280)	10"(250)

NOTICE

The information contained herein is not intended to replace the full product installation and safety information available or the experience of a trained product installer. You are required to thoroughly read all installation instructions and product safety information before beginning the installation of this product.

Approvals



Compliance with NSF/ANSI/3-A 14159-1-Hygiene Requirements for the Design of Meat and Poultry Processing Equipment



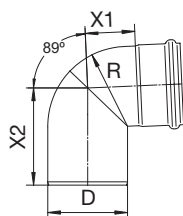
Product is certified to the uniform plumbing code ASME A112.6.3

Watts product specifications in U.S. customary units and metric are approximate and are provided for reference only. For precise measurements, please contact Watts Technical Service. Watts reserves the right to change or modify product design, construction, specifications, or materials without prior notice and without incurring any obligation to make such changes and modifications on Watts products previously or subsequently sold.



A WATTS Brand

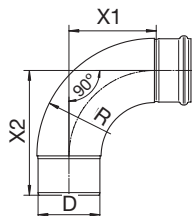
For Commercial, Industrial & Marine Applications



Global Ref. # 820.000.XXXAS

90° 1/4 Bend Dimensional Chart

Model No.	D	X1	X2	R
B1.5-90-316	1.5"(40)	1-1/4"(32)	3-1/8"(79)	1.5"(40)
B2-90-316	2"(50)	1-7/16"(35)	3-7/16"(86)	2"(50)
B3-90-316	3"(75)	1-15/16"(48)	4-1/4"(107)	3"(75)
B4-90-316	4"(110)	2-11/16"(68)	5-5/16"(134)	4"(110)
B5-90-316	5"(125)	3-1/2"(88)	6-5/16"(161)	5"(125)
B6-90-316	6"(160)	3-15/16"(99)	7-1/8"(181)	6"(150)
B8-90-316	8"(200)	11-3/4"(299)	15-5/8"(397)	8"(200)
B10-90-316	10"(250)	15"(350)	19-1/16"(484)	10"(250)



Global Ref. # 825.090.XXXS

90° Degree Sweep 1/4 Bend Dimensional Chart

Model No.	D	X1	X2	R
B2-90S-316	2"(50)	4-15/16"(125)	3"(77)	3-13/16"(97)
B3-90S-316	3"(75)	6-1/8"(155)	4-1/8"(105)	5-1/4"(133)
B4-90S-316	4"(110)	8-3/4"(222)	6-5/16"(160)	8-1/4"(209)
B6-90S-316	6"(160)	12-11/16"(322)	9-3/4"(247)	12-5/16"(313)

BLÜCHER®

A WATTS Brand

USA: T: (800) 338-2581 • F: (828) 248-3929 • Watts.com
 Canada: T: (905) 332-4090 • F: (905) 332-7068 • Watts.ca
 Latin America: T: (52) 55-4122-0138 • Watts.com