

Installation Instructions

BTS-EC Series

EZ Clean Slot Channel

⚠ WARNING



**THINK
SAFETY
FIRST**

Read this Manual **BEFORE** using this equipment.

Failure to read and follow all safety and use information can result in death, serious personal injury, property damage, or damage to the equipment.

Keep this Manual for future reference.



⚠ WARNING

Local building or plumbing codes may require modifications to the information provided. You are required to consult the local building and plumbing codes prior to installation. If the information provided here is not consistent with local building or plumbing codes, the local codes should be followed. This product must be installed by a licensed contractor in accordance with local codes and ordinances.

NOTICE

Follow the guidelines listed here for proper installation, operation, and maintenance.

BLÜCHER[®]

A **WATTS** Brand

⚠ WARNING

Need for Periodic Inspection/Maintenance: This product must be tested periodically in compliance with local codes, but at least once per year or more as service conditions warrant. All products must be retested once maintenance has been performed. Corrosive water conditions and/or unauthorized adjustments or repair could render the product ineffective for the service intended. Regular checking and cleaning of the product's internal and external components helps assure maximum life and proper product function.

NOTICE

Inquire with governing authorities for local installation requirements

Installation Guidelines

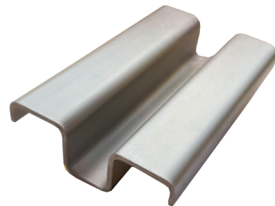
BLÜCHER BTS-EC EZ Clean Slot Channel is designed specifically for hygiene and cleanability purposes. By eliminating cross bars within the channel, we have reduced cleaning time and increased the cleaning efficiency for the BTS-EC.

BLÜCHER offers a square or round outlet box. The round outlet box prevents tension cracks in the flooring which typically occur at the outlet box corners.

Installation brackets, spaced 20 inches apart, ensure stability of the slot channel during installation. They are easy to remove after installation.



Circular Outlet Box



Special Distance Pieces

Typical Installation

Below are key points regarding the installation to ensure proper function specific to EZ Clean Slot Channels:



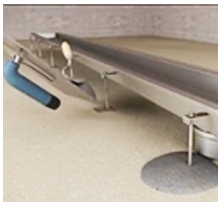
1. Infill: BLÜCHER channels come standard with an epoxy infill installed during production to provide channel strength. Channel provided without standard epoxy due to customer request must be filled with suitable alternative before installation to provide strength and integrity to the channel.



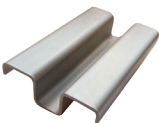
2. Assembly: Channels more than 20 feet long consist of two or more flanged channel sections to be joined on site. To assemble the consecutive channel sections, place the EPDM seal between the flanges prior to bolting together with the stainless steel nuts and bolts provided in the shipment. Nuts shall be tightened to 12.5 foot-lb. Each EPDM gasket is unique and should be kept with the corresponding flange that it is shipped with. After assembly, cut away any parts of the seal protruding on the inside or outside of the channel.
Flanges are numbered / lettered to match the flanged trench lengths to the main trench with outlet box. This is found on the bottom side of the trench on each section to match up correctly and ensure that the slope and current trench section is attached in the correct location.



3. Installation: Apply BLÜCHER joint lubricant to the drain/sump outlet with a cloth and attach P-trap hub or pipe extension hub with a back and forth twisting motion until full insertion is achieved. Pull back with a reverse twist to allow for expansion/contraction roughly 1/10 of an inch. For a video tutorial on push-fit pipe installation, follow the QR code to the left.

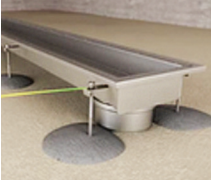


4. Installation: Adjust and anchor the channel into the ground after setting correct channel height needed for installation using BLÜCHER adjustable legs or all thread rod for stabilization (1/4" all thread may require tapping out the holes on the trench anchors to fit). This will prevent any channel float during casting. It is recommended that the adjustable legs or all thread are set in concrete.



5. Pre-Pour: Place the easy-to-clean slot braces every 20 inches on the trench to support the channel during installation. These stainless steel supports are kept in when the concrete is poured to ensure trench spacing is not affected due to concrete pour and pressure placed on trench until the concrete sets.

Typical Installation (Cont.)



6. Pre-Pour: If an equipotential bond is required, connect the earth wire to one of the adjustable legs before the concrete pour.



7. Pre-Pour: Leave drain/sump outlet covers installed. Leave or install any drain plugs for outlet.



8. Post-Pour: The floor casting and grade are dependent on which type of floor is used. Please refer to BLÜCHER channel installation for more information. Remove supports, drain covers, and drain plugs. Install drain grating, baskets, and outlet filter accessories.

Limited Warranty: Watts (the "Company") warrants each product to be free from defects in material and workmanship under normal usage for a period of one year from the date of original shipment. In the event of such defects within the warranty period, the Company will, at its option, replace or recondition the product without charge.

THE WARRANTY SET FORTH HEREIN IS GIVEN EXPRESSLY AND IS THE ONLY WARRANTY GIVEN BY THE COMPANY WITH RESPECT TO THE PRODUCT. THE COMPANY MAKES NO OTHER WARRANTIES, EXPRESS OR IMPLIED. THE COMPANY HEREBY SPECIFICALLY DISCLAIMS ALL OTHER WARRANTIES, EXPRESS OR IMPLIED, INCLUDING BUT NOT LIMITED TO THE IMPLIED WARRANTIES OF MERCHANTABILITY AND FITNESS FOR A PARTICULAR PURPOSE.

The remedy described in the first paragraph of this warranty shall constitute the sole and exclusive remedy for breach of warranty, and the Company shall not be responsible for any incidental, special or consequential damages, including without limitation, lost profits or the cost of repairing or replacing other property which is damaged if this product does not work properly, other costs resulting from labor charges, delays, vandalism, negligence, fouling caused by foreign material, damage from adverse water conditions, chemical, or any other circumstances over which the Company has no control. This warranty shall be invalidated by any abuse, misuse, misapplication, improper installation or improper maintenance or alteration of the product.

Some States do not allow limitations on how long an implied warranty lasts, and some States do not allow the exclusion or limitation of incidental or consequential damages. Therefore the above limitations may not apply to you. This Limited Warranty gives you specific legal rights, and you may have other rights that vary from State to State. You should consult applicable state laws to determine your rights. **SO FAR AS IS CONSISTENT WITH APPLICABLE STATE LAW, ANY IMPLIED WARRANTIES THAT MAY NOT BE DISCLAIMED, INCLUDING THE IMPLIED WARRANTIES OF MERCHANTABILITY AND FITNESS FOR A PARTICULAR PURPOSE, ARE LIMITED IN DURATION TO ONE YEAR FROM THE DATE OF ORIGINAL SHIPMENT.**

BLÜCHER®

A WATTS Brand

USA: T: (800) 338-2581 • F: (828) 248-3929 • Watts.com

Canada: T: (888) 208-8927 • F: (888) 479-2887 • Watts.ca

Latin America: T: (52) 55-4122-0138 • Watts.com