

Engineering Specification

Job Name _____
 Job Location _____
 Engineer _____
 Approval _____

Contractor _____
 Approval _____
 Contractor's P.O. No. _____
 Representative _____

BTC Transition Couplings

Specification:

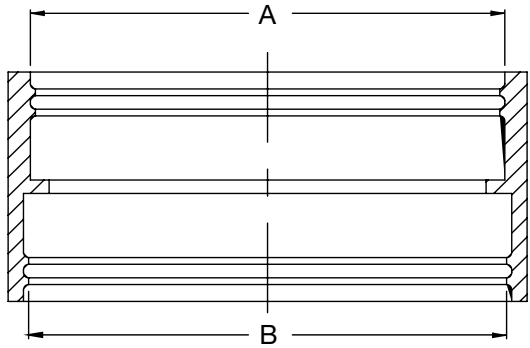
BLÜCHER BTC AISI Type 301 stainless steel band and clamp with an inner neoprene rubber gasket. Transitions BLÜCHER stainless steel pipe or fittings with no hub cast iron or Schedule 40 piping systems.



Call customer service if you need assistance with technical details.

Dimensional Chart

MODEL NO.	ORDER NO.	A		B
		BLUCHER PIPE	CAST IRON	SCH40
BTC-2x2	8187919	2"(50)	2"	2"
BTC-3x3-NH	8187920	3"(75)	3"	-
BTC-3x3-SCH40	8187921	3"(75)	-	3"
BTC-4x4-NH	8187922	4"(110)	4"	-
BTC-4x4-SCH40	8187923	4"(110)	-	4"
BTC-6x6-NH	8187924	6"(160)	6"	-
BTC-6x6-SCH40	8187925	6"(160)	-	6"



NOTICE

The information contained herein is not intended to replace the full product installation and safety information available or the experience of a trained product installer. You are required to thoroughly read all installation instructions and product safety information before beginning the installation of this product.

Approvals



Product is listed by IAPMO
 R & T to ASME
 A112.3.1-2007 (R2012)



A WATTS Brand

USA: T: (800) 338-2581 • BLUCHERpipe.com
Canada: T: (888) 208-8927 • BLUCHERpipe.com
Latin America: T: (52) 55-4122-0138 • BLUCHERpipe.com

