

**For Commercial And Industrial Applications**

Job Name \_\_\_\_\_

Contractor \_\_\_\_\_

Job Location \_\_\_\_\_

Approval \_\_\_\_\_

Engineer \_\_\_\_\_

Contractor's P.O. No. \_\_\_\_\_

Approval \_\_\_\_\_

Representative \_\_\_\_\_

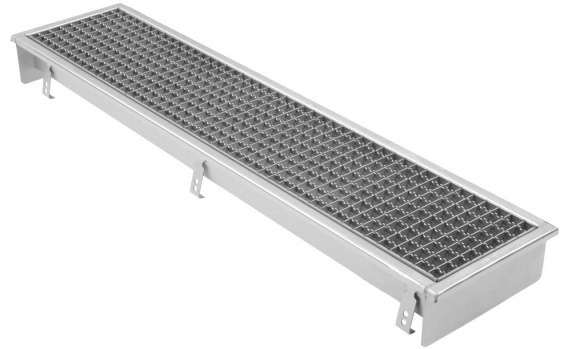
Tag \_\_\_\_\_

# Series BT3

## 3" Wide Pre-Sloped Trench Drain

### Specification

BLÜCHER Series BT3 AISI Type 304 stainless steel pre-sloped trench drain, 3"(76) wide x (specify) long, with 1% longitudinal slope and 160 degree cross fall, 1"(25) thick mesh grating, and spigot outlet.

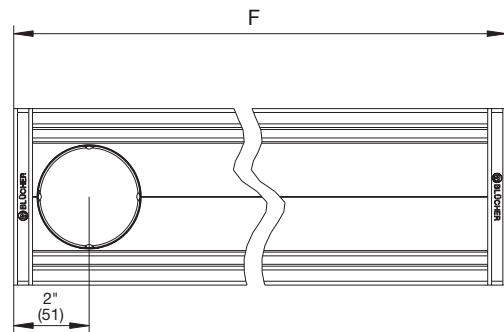
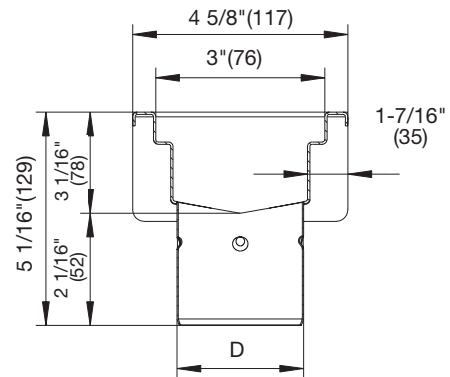


### Dimensions

Model No.	Pipe Size D	Length F
Series BT3	Specify	Specify

Optional Grating		
Suffix	Description	
-HG	Hygienic-Pro Grating	<input type="checkbox"/>
-LG	Ladder Grating	<input type="checkbox"/>
-SG	Slot Grating	<input type="checkbox"/>
-SH	Shower Grating	<input type="checkbox"/>

Options (Select One or More)		
Suffix	Description	
-316	Type 316 Stainless Steel	<input type="checkbox"/>
-FC	Outlet w/Membrane Clamp	<input type="checkbox"/>
-LD	Grate Locking Device	<input type="checkbox"/>
-P	Stainless Steel P-Trap	<input type="checkbox"/>



**NOTICE**

The information contained herein is not intended to replace the full product installation and safety information available or the experience of a trained product installer. You are required to thoroughly read all installation instructions and product safety information before beginning the installation of this product.

### Approvals



Compliance with NSF/ANSI/3-A 14159-1-Hygiene Requirements for the Design of Meat and Poultry Processing Equipment



\* Product is certified to the uniform plumbing code ASME A112.6.3



**A WATTS Brand**