

Engineering Specification

Job Name _____

Contractor _____

Job Location _____

Approval _____

Engineer _____

Contractor's P.O. No. _____

Approval _____

Representative _____

Tag _____

BHD-100 Hub Drain

Specification:

BLÜCHER BHD-100 AISI Type 304 stainless steel hub drain with bottom outlet.

Dimensional Chart

| MODEL NO. | PIPE SIZE D | D1 | H | H1 |
|-----------|----------------|--------------|---------------------------------|--------------|
| BHD-102 | 2"(50) | 6-5/16"(160) | 10-11/16"-11-9/16" (271-293) | 2-1/8"(54.5) |
| BHD-103 | 3"(75) | 6-5/16"(160) | 10-7/8"-11-3/4" (276-298) | 2-9/16"(65) |
| BHD-104 | 4"(110) | 6-5/16"(160) | 7"(177) | 3"(77) |
| BHD-106 | 6"(160) | 9-7/8"(250) | 15-13/16"-17-3/16" (402-437) | 3-7/8"(99) |
| BHD-108 | 8"(200) | 9-7/8"(250) | 10-1/8"(257) | 3-3/4"(96) |

| OPTIONS | | |
|---------|--------------------------|--------------------------|
| SUFFIX | DESCRIPTION | |
| -316 | Type 316 Stainless Steel | <input type="checkbox"/> |
| -B | Sediment Basket | <input type="checkbox"/> |

Approvals



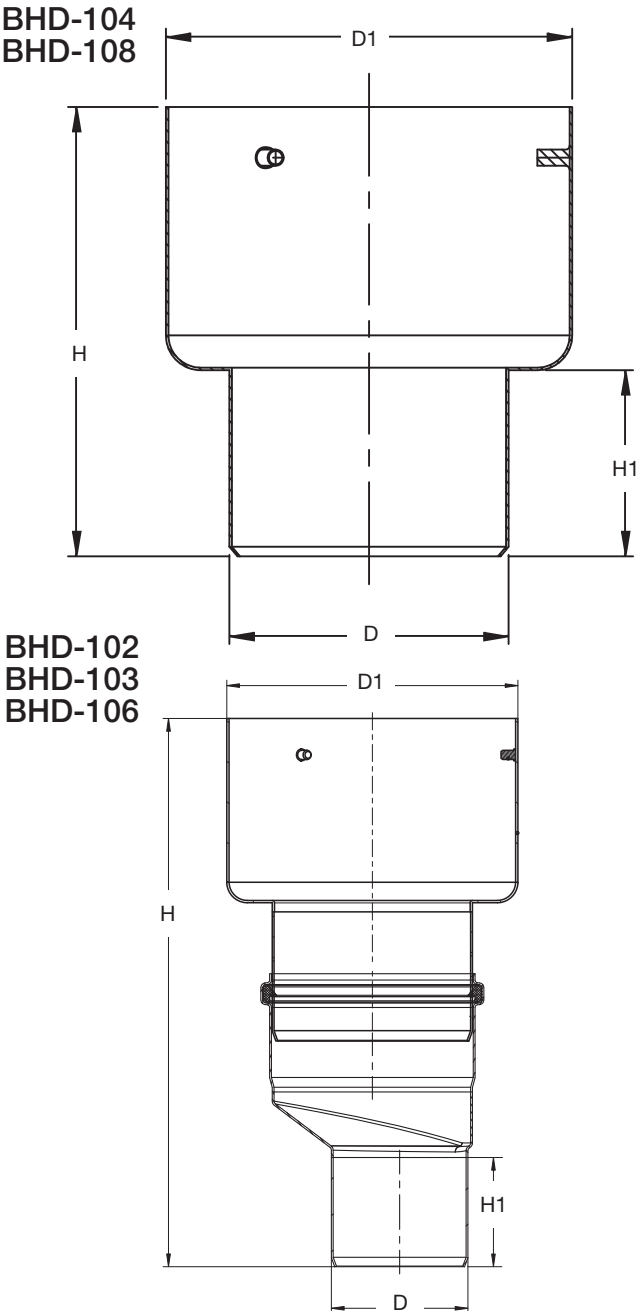
Compliance with NSF/ANSI/3-A 14159-1-Hygiene Requirements for the Design of Meat and Poultry Processing Equipment



* Product is certified to the uniform plumbing code ASME A112.6.3

NOTICE

The information contained herein is not intended to replace the full product installation and safety information available or the experience of a trained product installer. You are required to thoroughly read all installation instructions and product safety information before beginning the installation of this product.



A WATTS Brand